



Job Description

Landcare Networker(s)
0.5 - 1.0 FTE: Flexible
Location: Flexible
Salary Range: \$71,896 - \$84,797

1. POSITION BACKGROUND

The WA Landcare Network Inc (WALN) is the peak state landcare body established to represent and support land and coastcare groups across the State and at a National level. WALN is effectively owned by grassroots land and coastcarers.

WALN is focused on providing improved support, coordination and capacity building to community-based land and coastcare groups and increasing input into natural resource management decision making.

The Landcare Networker role supports the WALN Executive Officer to operate an effective and useful Statewide network that supports and strengthens community-based land and coastcare groups in Western Australia.

The Landcare Networker role involves facilitating consultation, collaboration and networking amongst community based landcare groups and building capacity across the network to assist effective landcare.

Given the size of Western Australia WALN is considering engaging one or more Landcare Networkers to work as a team supporting the network in different parts of the State.

Further information about the WA Landcare Network is available at www.landcarewa.org.au

2. POSITION DETAILS

Position Title:

Landcare Networker

Position Term:

Contract commencing November 2020 and expiring October 2022 subject to three month review. With possible extension depending on funding arrangements and performance.

Remuneration package:

Total remuneration package depends on experience and agreed working hours and includes:

- Salary - Level 3 - 4 WA State Public Service (Equivalent) \$71,896 - \$84,797 pro rata
- Superannuation (9.5% of Salary)
- Pro rata Annual, Personal and Long Service Leave
- Authorised out of pocket expenses and travel will be reimbursed at agreed rates.

Location and travel arrangements:

WALN works remotely across the State so work location is flexible.

Office accommodation may be found within a WALN member organisation or work from home can be considered. Regular travel within WA for meetings will be required.

3. POSITION DUTIES & RESPONSIBILITIES

The primary function of the Landcare Networker is to:

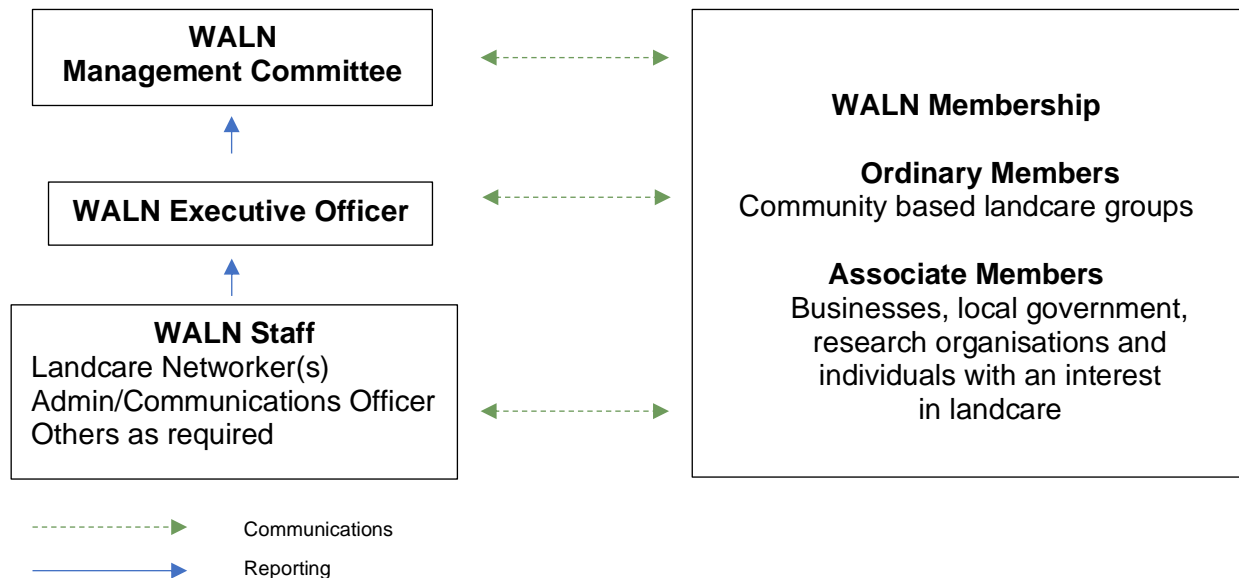
- Increase engagement of community based coast and landcare groups across the WA Landcare Network.
- Undertake network consultation on issues to assist with representing the interest of the community coast and landcare movement.
- Facilitate group collaboration on coast and landcare projects.
- Support regional landcare forums co-designed by local groups to increase knowledge sharing and build capacity.
- Host webinars to increase communications across the network.
- Respond promptly to landcare enquiries as required.
- Support fundraising efforts of local groups.
- Contribute generally to WALN communication and engagement initiatives.

With regard to 2020/21 deliverables from National Landcare Program and State Government Core Business support funding the Landcare Networker(s) will be responsible for the following specific activities:

- Leading a membership drive to increase engagement in the regions.
- Coordinating regional forums to bring groups together.
- Facilitating webinars on hot topics.
- Conducting Fortnightly Landcare Checks In.
- Working with landcare groups to raise their profile in the media.
- Initiating meetings with grower groups, Recognised Biosecurity Groups, Aboriginal caring for coast and country groups etc to explore collaboration and joint action.
- Conducting member surveys to understand the state and the needs of the coast and landcare movement in WA.

- Collating local funding sources and offering marketing and fundraising capacity building training.
- Contribute to projects that support the achievement of WALN strategic and operational objectives.
- Assisting in the implementation and of the strategic, operational and project plans as appropriate.

4. POSITION REPORTING AND COMMUNICATIONS



WHAT WALN IS LOOKING FOR: SELECTION CRITERIA

The successful candidate will:

- ✓ possess strong communication and relationship building skills
- ✓ be an experienced facilitator able to engage successfully with public, private and community sectors
- ✓ have experience in the community based landcare movement in WA with strong networks
- ✓ have experience in media and public speaking
- ✓ have capacity to represent the interests of community coast and landcare in WA
- ✓ demonstrate ability to work collaboratively in a small motivated team showing flexibility, innovation, compassion at the same time as meeting good governance standards
- ✓ have experience in management of coast or landcare projects
- ✓ demonstrate the ability to work independently and manage time effectively
- ✓ current WA 'C' Class Driver's License

6. SUBMITTING YOUR APPLICATION

Your application should be submitted to enquires@landcarewa.org.au no later than 4.00 pm 16 October 2020 and should include the following:

1. Cover letter outlining your interest in the position.
2. A statement addressing how your experience and knowledge could contribute to WALN with particular reference to WALN's selection criteria for the position.
3. Your Curriculum Vitae.
4. 2 x referees that can be contacted.

WA Landcare Network is committed to fair, equitable and transparent recruitment processes. Key steps in this recruitment process include:

1. Applications are submitted by the due date.
2. A Selection Panel will convene to assess applications and invite short listed applicants for interview.
3. Interviews will be conducted.
4. Successful applicants will be notified.
5. All applicants will be notified of the outcome.

WA Landcare Network is keen to complete the selection process as quickly as possible to enable the position to be filled by early to mid-November 2020.

Any questions should be directed to Dr Louise Duxbury on 0429 409 231.