

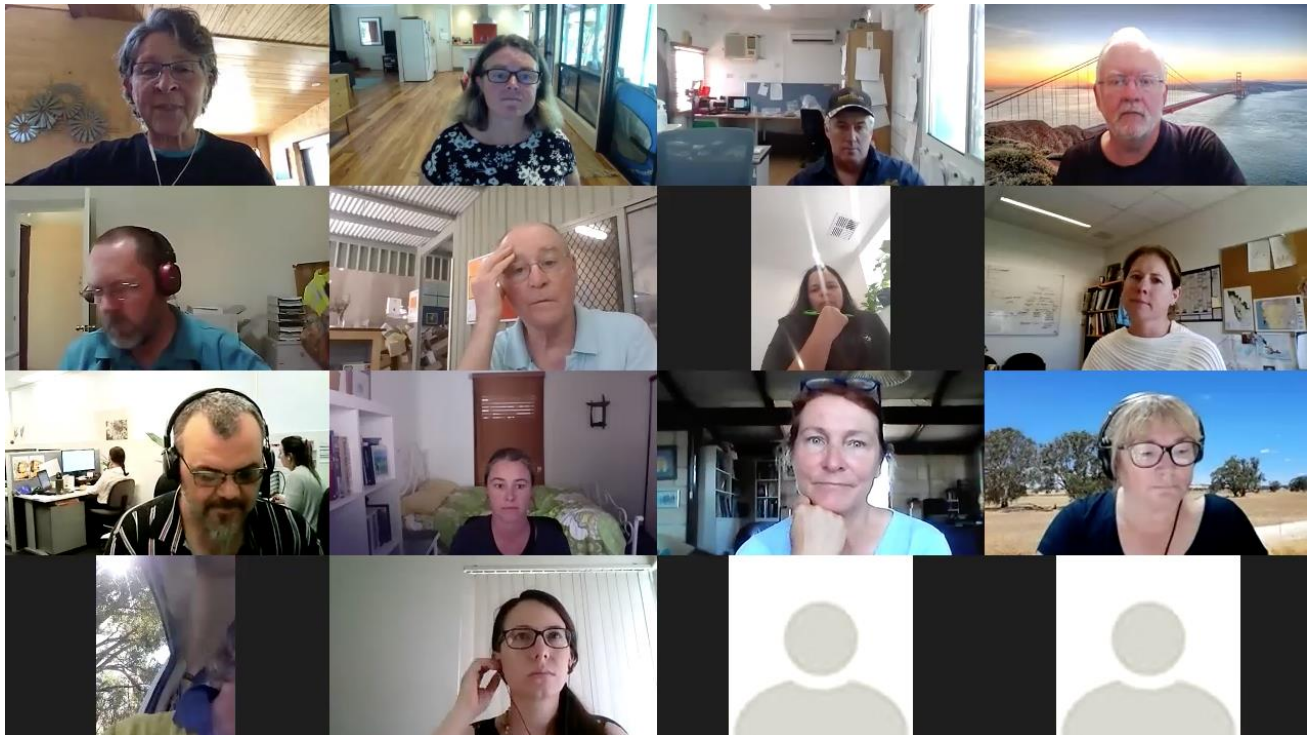


Landcare Checks In - Monday 23 November 2020 at 2.00 – 3.00 pm

Discussion Topic: Landcare Seed collecting and propagation services

- Who's out there in the native seed collection and propagation industry?
- What do landcare groups need?
- What are the community landcare nurseries providing?

View the recording <http://www.landcarewa.org.au/wp-content/uploads/2020/11/Landcare-Checks-In-23-November-Native-Seed-Collection-and-Propagation.mp4>



Discussion Notes

Trends/Issues

- Worrying increase in land clearing. Need for seed collecting. More activity from developers. Not following procedure and land management practices.
- Timelines for propagation– timing of State NRM grants is difficult. Nurseries like to have all seeds planted by December to enable delivery by June/July the following year.
- Quality of seed – nurseries need to be sure that seed collectors are reliable and are collecting good quality seed.
- Difficulty in getting some local provenance species. Most people will substitute. People are having to expand provenance zones, especially in the urban areas.

- Recent increase in infrastructure projects throughout WA. All nurseries will be very busy over the next 5 years.
- Seed demand has increased in the last few years. The seed collector networks needs to be expanded. Attracting the right people – Green Jobs opportunities including indigenous groups.
- Seed collecting is a dying art – industry succession needed, training up new collectors, mentored by experienced seed collectors
- REIWA Accredited Program is needed. Possibly a role for WALN to help with collaboration and help with roll out.
- Setting a price on seed is an issue for seed collectors – Its hard work and gauging the real cost to present on the commercial market is tricky.
- Maintaining provenance is very important. Contamination of genetics is a worry especially where there are TECs. Species substitution is worrying.
- Purchasers and end users need training. Seed literacy improvement is needed.
- Increasing demand for large scale restoration projects. Lots of corporate interest in voluntary interest. Landcare community needs to scale up.
- Species substitution is often needed. Tied with timing of funding announcements.
- State NRM is pushing out large plant orders. Hard for industry to work around. WALN to raise issue with State NRM Office. Others can email to reinforce issue. snrmo@agric.wa.gov.au
- Climate change – Need to fully understand the impacts of decisions on provenance issues with regard to climate change. Moving seed will degrade the evolution process. Changing genetics can impact on the ability of plants to adapt to climate change

Lucy Commander, Australian Network for Plant Conservation (ANPC)

- All the issues mentioned are national issues as well.
- National report – issues in the seed sector. Seed collectors not getting enough for their seed, no one being trained up, species are not available leading to species substitution
<https://www.anpc.asn.au/product/the-australian-native-seed-survey-report-e-version/>
- Florabank Guidelines 1999 are currently being updated. 15 guidelines some similar and some incorporating new research eg provenance. Want to get good community engagement so email Lucy if you want to be involved florabank@anpc.asn.au.
- ANPC Guidelines are available free online, people can subscribe to monthly newsletters.
<https://www.anpc.asn.au/>
- International Seed Testing Association has testing guidelines
<https://www.seedtest.org/en/home.html>

Commercial seed collectors or propagators present

Richard McDowell – APACE

One stop shop for seed collection and propagation.

Not a seed merchant. Provide seed for clients who request seed for particular projects/jobs including community and landcare groups and commercial clients such as local government, private entities.

Conduct native seed collection and processing workshops for clients.

Propagation – for the nursery (garden industry) and provenance seed propagation

APACE keen to be involved, to provide non-accredited training, community engagement, collection and propagation services. Contact – projects@apacewa.org.au

Lisa and Dustin McCreery, Chatfields Nursery, Tammin

Currently producing 700,000 propagated cuttings.

Seeding about 2000 different species from Geraldton to Esperance into Perth (whole of the wheatbelt).

Very broad range of species.

Grow for private farmers. Local government. Mining companies, NRMs and landcare groups.

Once season nursery – everything planted by December and sold the following June, July, August.

Krystyna Winter, Plantrite

Plantrite's core business is revegetation and to propagate and supply tube stock.

Provenance and off spec sowings and contact grows

Supply commercial growers, local government, mining companies, Bunnings and commercial landscaping market

Most plants go to the Swan Coastal Plan but not limited to that area

95% of propagation inhouse from tissue culture, cuttings, seed and grafting

Increasingly hard to get seed from certain provenances in urban spaces.

60-70% of plants grown on spec and don't always sell everything. 3-4 million stems for revegetation/year

Richard Clark and Rod Cary, Geographe Community Landcare Nursery

Based in Busselton. Grow around 400-500 native species, mostly local species – Capel to Augusta over to Nannup. Specialise in lower SW flora however, also grow plants from further afield.

Total production is 150,000 plants which is all sold.

Commercial seed licence for the Busselton Shire. Would like to expand collection area but don't seem to have the time

Most of seed collected is used at the nursery. Do buy some seed from other suppliers.

Experienced small time collector having done APACE training many years ago.

Ordering on time is difficult. Can provide substitutes.

Bryony Lewis Nindethana Seed

Seed business with large network of seed collectors with WA and around Australia

Supply seed for several years to small and larger scale revegetation projects, often provenance based

Owned by Greening Australia

Involved with traditional owner training

Various seed collectors on the books. Number of species.

Range of seed collects provide capability to focus on and provide provenance seed.

Can provide species selection recommendations

Human Nature

Commercial contractor currently contracted through Greening Australia

Current project working with 5 aboriginal ranger groups. Several months of practical on ground seed collection training including Plant ID, collection processes and extraction and cleaning processes.

Accredited trainee units for TAFE. Great to give traditional owners capacity to be involved.

Green Jobs program is likely to give further opportunities – important as it will provide continuity.

Great to give indigenous people reconnection to cultural knowledge. Next step is helping them getting into propagation.