

# 2021-22 ANNUAL REPORT



*Growing and supporting community landcare*

*We acknowledge First Nations Peoples as the traditional custodians of the continent, the first landcarers, and we recognise and learn from their unique cultural and spiritual relationships to the land, waters, and seas.  
We pay our respects to Elders past, present and emerging.*

**CONTENTS**

<b>A Message from Our Chair</b>	<b>1</b>
<b>2021-22 Snapshot</b>	<b>2</b>
<b>Who is the WA Landcare Network?</b>	<b>3</b>
<b>Growing and Supporting Community Landcare</b>	<b>4</b>
<b>2021-22 Key Achievements</b>	<b>5</b>
- Advocate for and Represent the WA Landcare Movement	5
- Network Consult and Communicate	6
- Sustain and Build Capacity of the WA Landcare Movement	8
- Strengthening WALN’s capacity to facilitate Landcare	9
<b>WALN Membership</b>	<b>10</b>
<b>The WALN Team</b>	<b>12</b>
<b>Financial Report</b>	<b>13</b>
<b>Executive Officers Report</b>	<b>14</b>
<b>WALN as part of the National Landcare Network</b>	<b>15</b>



## A MESSAGE FROM OUR CHAIR

It's been another challenging and rewarding year for WALN as we continue to grow our membership and increase landcare's collective impact in Western Australia. The continued delivery of member engagement activities in-person and online has been recognised widely as a critical role for WALN and we look forward to continuing this into the future.

The environment is thankful for all of your work this year, and your tireless efforts over the many years prior. But we know we have more to do – more for our members, more for our community and more for the landscapes that so desperately need landcare to be strong in the hearts and minds of all Western Australians. Landscapes that can support our people, our towns and our rich biodiversity.



The challenges our members tell us they are facing are not new; just increasing in their cumulative impact. Extremes in weather, fluctuations in funding, gaps in understanding, different cultural perspectives and new technologies have all challenged the way we work; and to combat these challenges WALN seeks to ensure our landcare community is strong, well-resourced and well appreciated – so you can do what you do so well – care for our lands and seas.

But we can't do it alone. We need to share our visions for the future with each other, work with old and new partners, open ourselves to new ways of addressing the threats that assail us and share our stories with our communities so that people can hear about our successes; and understand our failures. Only by working together can we tackle these big problems, one step at a time. Together.

We can continue to advocate for better recognition of our member needs including increased and more stable funding so our amazing groups and volunteers can continue their fantastic work. As growth in numbers strengthens our vision of a single, collective voice for landcare, I personally welcome all of you who have joined us in the past 12 months and thank you for your contribution.

WALN's Committee has continued to work hard as always and I'd like to thank the entire committee – Jo Ludbrook, John Holley, Helen Watkins, Freya Spencer, Julian Sharp, Bruce Ivers, Sabian Wilde and our many many volunteers for their tireless commitment.

WALN's dedicated staff have continued to put in 110% effort, attending numerous local meetings, travelling across the state and nation, engaging our membership and delivering projects like WALN's highly commended Landcare Checks In series to support and empower our members, while growing groups' skills and knowledge and supporting their own local visions for their future.

Above all I'd like to thank you once again for your membership, for your support and for your tireless work for our State's environment. Every little bit you do helps, you are making a difference and collectively and collaboratively you multiply one another's efforts hugely!

**Mick Davis, Chairperson, WA Landcare Network**

## 2021 -22 SNAPSHOT

### *Membership*

24%↑ 

Ordinary Members

146%↑ 

Associate Members

### *Landcare Advocacy*

3  Submissions

6  Advocacy Meetings

1  Members Survey

1  Value of Landcare Report

### *Networking and Capacity Building*

12  Landcare Checks In

4  Landcare Build Skills

2  Forums

10  Networking Events

### *Communications*

11  Landcare News

1526  Facebook Followers

## WHO IS THE WA LANDCARE NETWORK ?

### 'A Collective Independent Voice for WA landcare

The WA Landcare Network (WALN) is the peak state landcare body established to represent and support the network of diverse community organisations working together to address Western Australia's most challenging environmental problems.

To support and foster effective landcare in Western Australia WALN:

- ❖ acknowledges Indigenous Australians as the first landcarers of our country and recognises their continuing connection to land, water and community. WALN welcomes Indigenous custodians into the landcare community and wishes to engage, partner and share knowledge to jointly care for country.
- ❖ recognises and values the landcare community as the grassroots carers for the WA environment and our State's future. The WALN network is open to all organisations with an interest in landcare. WALN is effectively owned by grassroots landcarers. WALN not only connects landcare groups of all shapes and sizes, it provides landcare information and resources, and represents landcare across the State.
- ❖ strives to be a collective independent voice for landcare and advocates on behalf of the landcare community at a State and Federal level based on a real-time understanding of what's happening on the ground. WALN hopes through strong advocacy on behalf of grassroots landcare we can build better support and capability for landcare in WA.
- ❖ aims to build a landcare network that supports and strengthens the capability of landcare groups and individuals and enables them to get the landcare job done. WALN aims to assist landcarers to undertake their work and build strong state, national public and private support and involvement. WALN believes through increased support, coordination and capacity the landcare community can collectively achieve better environmental outcomes for WA.



## Growing and Supporting Community Landcare

### Vision

A supported network of diverse community organisations working together to address Western Australia's most challenging environmental problems and building communities able to respond positively to changes; resulting in a natural environment with fully functional ecosystems, a sustainable and productive agricultural system; and healthy, happy and resilient communities.

### Mission

To establish an operating and useful landcare network in Western Australia that supports and strengthens the ability of member groups to undertake their work and have strong state, national public and private support and involvement.

### Strategic Directions



#### Advocate and Represent

Listening to and sharing the collective voice of the WA Landcare movement with Federal and State decision makers



#### Network and Consult

Developing and increasing membership and stakeholder links while providing a wide range of opportunities for knowledge sharing



#### Build and Sustain

Securing resources and facilitating projects that accelerate positive landcare efforts



#### Strengthen Capability

of WALN through good organisational governance and following sound principles

## 2021-22 KEY ACHIEVEMENTS

Established in 2014 the WA Landcare Network has recently completed its eighth year.

WALN is proud to report on the following key achievements against its four organisational objectives during the 2021-22 financial year:

### 1. Advocate for and Represent the WA Landcare Movement

- Continued to represent community landcare in Western Australia on the National Landcare Network (NLN) Board and Member Council, providing input and advocating for improved Federal funding and support for community landcare.
- Assisted the NLN with the co-design of the Australian Community Landcare Futures Framework ahead of the 2022 Federal Election. The Framework proposes a \$48 million investment in grassroots landcare over five years complementing the Regional Land Partnership program. NLN continues to communicate with Federal Government Departments and Ministers with aim of driving change towards this framework.
- Assisted the NLN to work towards a collaborative agreement with Landcare Australia to support a united voice for Landcare at the National level. Although not yet in place significant work has been achieved towards a mutually beneficial agreement for the future.
- Participated in NLN's Regional Principal's Working Group developing a collaborative agreement with NRM Regions Australia to enhance collaboration at the national level and the development of a framework for application at the local level.
- Conducted or attended 6 meetings to advocate on behalf of the landcare community, including with Parliamentarians.
- Commissioned the preparation of a Value of Landcare Report to examine the value of community landcare in Western Australia. In July 2022 The WA Landcare Network (WALN) was pleased to release the report 'People Place Future – The Value of Community Landcare in Western Australia'.
- Completed the biennial survey of WA Landcare Network Members conducted between May and July 2021 seeking to understand the needs and challenges of community-based land and coastcare groups across Western Australia, to better support them, and to inform WALN's actions as a collective peak landcare voice at the State and National level. The survey resulted in 109 responses from landcare groups across the State. WALN released the outcomes of the survey in May 2022 through the report Infographic Summary of Results of the 2021 WA Landcare Network Biennial Survey.
- Facilitated landcare community input and prepared submissions on behalf of the WALN members and the wider landcare community to the following review processes:
  - Department of Water and Environmental Regulation Review - Stakeholder Feedback
  - Citizen Science Wildlife Licencing - Meeting and letter to Hon. Ministers' McTeirnan and Whitby
  - Native Vegetation Draft Policy - Submission

## 2. Network, Consult and Communicate with Members and the Broader Landcare Movement

- Increased Ordinary Membership from 133 to 164 groups (23 % increase) and Associate Membership from 39 to 96 members (146 % increase) during the financial year increasing WALN's reach in the landcare community.
- Conducted an ongoing a WALN membership drive throughout the year promoting Ordinary and Associate membership at events, in monthly Landcare News and through targeted email campaigns.
- Continued to assist the emerging WA Coastal and Marine Community Network (WACMCN) with an online presence, newsletter editorial and engagement of a part-time Coastal Officer. WALN sponsored a successful 2022 Coastwest grant to further support the WACMCN.
- Celebrated the achievements of WA Finalists in the 2021 National Landcare Awards at a face-to-face event at the Kalamunda Community Centre on 5 August 2021. Guests watched the online presentations on the big screen hosted by Costa Georgiadis to honour finalists and celebrate winners across Australia.
- Conducted a successful 2021 Annual Network Gathering on 19 November 2021 including the Annual General Meeting at the Kalamunda Community Centre. The one-day forum explored the theme 'Reimagine and Restore WA' with presentations and discussions on how we can work together across communities, landscapes, tenure, production and ecosystems.
- Hosted the WA Landcare Awards 2021 Gala Presentations at the Kalamunda Community Centre on 19 November 2021 in partnership with the State NRM Office. The Awards recognised landcare champions in eight categories from across WA. 2021 Winners were automatically nominated as State finalists in the 2022 National Landcare Awards.
- Attended a range of networking events to promote WALN and its services to members of the landcare sector including: Dowerin Field Days, The Last Stand Symposium and Field Trips, Celebrating Community Driven Conservation, two meetings of the Environmental Umbrella Group Collective, Coastal and Marine Community Network Workshop, 2022 Wetlands Conference, Minister's Carbon Forum, South Coast NRM Carbon Forum, and the Feral Cat and Fox Forum.







- Partnered with Warren Catchment Council to successfully deliver 'Boodjarra Gabba Koorling' 'Water in a Drying Climate' Climate Resilience Forum on 10 September 2021 in Manjimup. An all-day forum providing thought provoking presentations and panel discussions to assist landcare groups, farmers, businesses and the community navigate the topic of water in a drying climate.
- Participated in the 2022 State NRM and Coastal Conference Organising Committee scheduled for September 2022 making a major contribution to securing keynote speakers and organising the Regenerative Agriculture and Healing Country Panels.
- Continued to maintain a landcare enquiry register and responded to over 80 landcare enquires generated through the WA Landcare Network website.
- Maintained regular communications with WALN members and the wider landcare community through a revamped monthly Landcare News, member emails and social media.
- Continued to expand the WALN website [www.landcarewa.org.au](http://www.landcarewa.org.au) providing further resource information for WALN members and the wider landcare community.

### 3. Sustain and Build Capacity of the WA Landcare Movement

- Conducted four Landcare Build Skills sessions including:
  - Facilitators Training Course held on Friday 30 July 2021 presented by Louise Duxbury. Facilitation resources were also uploaded onto WALN Website.
  - Introduction to Infographics held on 23 March 2022 was presented by experienced Communications and Marketing Consultant, Emma Brewer.
  - Conference Abstract Writing Workshop held on 12 May 2022 was presented by experienced consultant, Tara Whitney from Whitney Consulting.
  - Data Collection and Management for Landcare held on 29 June 2022 was a scoping exercise to identify the types of data landcare groups wish to collect, the issues they are experiencing and to co-design a skills building program to make data collection easier.
  
- Conducted twelve Landcare Checks In sessions as an online opportunity for landcarers to regularly come together to chat about landcare issues. These sessions attracted increasing landcarers with typical numbers between 25-50 participants.
  
- Topics covered in 2021-2022 included:
  - Are we winning with foxes?
  - Ecosystem and Human Health
  - Lotterywest Grants for Landcare
  - Blue Carbon Incentives in WA
  - Draft Native Vegetation Policy
  - Attracting and Retaining Landcare Volunteers
  - Investigating impacts of offroad vehicles on the WA's coastline
  - 2022 Landcare Checks in Kicks Off
  - Engaging Farmers in Regenerative Agriculture
  - Increasing our Impact with Landcare Advocacy
  - Climate Change and Ecological Restoration
  - Seed and Seedling Supply for Biodiverse Revegetation
  
- Conducted an online Regional Landcare Coordinators Catch up providing an informal opportunity for paid and volunteer landcare coordinators to interact, share knowledge and ideas and learn from one another. This initial session scoped the frequency, format, and content of future catch ups and was attended by 23 Landcare coordinators from across regional areas. A follow up Regional Landcare Coordinators contact list has now been developed to connect coordinators further.
  
- Developed a Landcare Story Package to assist landcare groups to raise their profile. Six groups will be supported through the package with 3 groups having their landcare stories completed in 2021-22 and showcased through WALN's Landcare News, Facebook Page and website as well as distribution of stories to Statewide and regional media outlets.
  
- Continued to promote the WA Landcare Insurance Scheme to members and the wider landcare community to significantly lower costs and provide affordable insurance to a range of landcare groups.
  
- Regularly promoted landcare funding and capacity building opportunities to the WA Landcare Network through WALN's monthly Landcare News.

## 4. Strengthening WALN's capacity to facilitate landcare

- Secured ongoing National Landcare Program funding to continue to support and grow the WA Landcare Network and represent WA in landcare discussions at the Federal level.
- Continued delivery of one-off \$300,000 Core Funding Package from the WA State Government Natural Resource Management Program enabling WALN to strengthen its reach and support to community coast and landcare groups. This included appointing the WALN Landcare Networker position.
- Submitted an application to the 2022 State NRM Community Stewardship Grants Program for \$450,000 over 3 years to continue to delivery of capacity building and networking services to WALN members and the wider landcare community.
- Held discussions with Lotterywest and Conservation Council of WA about a collaborative project to provide data on the return on investment of landcare coordinators. This proposed project will provide valuable data to support future funding of landcare coordinators across the State.



## WA LANDCARE NETWORK MEMBERSHIP

A strong WALN membership base helps demonstrate the level of grassroots support for landcare in WA.

Membership of the WA Landcare Network Inc (WALN) includes two classes of membership:

- ❖ **Ordinary Membership** open to any community group with an active interest in landcare; and
- ❖ **Associate Membership** open to individuals, local government authorities, businesses, schools and research organisations engaged in landcare.

During 2021-2022 WALN enjoyed considerable growth in membership. Ordinary Membership increased from 133 to 164 groups (23 % increase) and in Associate Membership increased 39 to 96 members (146 % increase) increasing WALN's reach in the landcare community.

### MEMBER GROUPS

#### 164 ORDINARY MEMBERS @ 30 June 2022

Activate Tree Planting	Corrigin Farm Improvement Group
APACE AID Inc	Cottesloe Coastcare Association
Armadale Branch Wildflower Society of WA	Denmark Environment Centre
Armadale City Rivercare Group	Denmark Bird Group Incorporated
Armadale Gosnells Landcare Group Inc	Denmark Weed Action Group
Armadale Settlers Common Management Group	Derby Landcare Group
Augusta Community Nursery/Augusta Land and Coastcare	Dumbleyung Land Conservation District Committee
Australian Coastal Society	Dunsborough Coast and Land Care Inc.
Avon Valley Environmental Society Inc	Eastern Metropolitan Regional Council
Avongro Inc.	Ellen Brockman Integrated Catchment Management Group
Badgebup Aboriginal Corporation	Environs Kimberley
Baigup Wetland Interest Group	Falcon Coastcare
Baldivis Children's Forest	Frenchman Bay Association
Balingup Friends of the Forest	Friends of Bold Park Bushland Inc.
Bannister Creek Catchment Group	Friends of Booragoon and Bluegum Lakes
Bibbulmun Track Foundation	Friends of Bill Brown Park
Bicton Environmental Action Group	Friends of Cantonment Hill
Blackadder Woodbridge Catchment Group Inc	Friends of Clontarf Hill
Blackwood Basin Group	Friends of Coolbina Bushland
Blackwood Biosecurity Inc.	Friends of the Dale River
Blackwood Environment Centre	Friends of Erindale Road Bushland
Bungendore Park Environment Group Inc.	Friends of Gabbiljee
Busselton Dunsborough Environment Centre Inc.	Friends of Gracetown and Cowaramup Bay Friends of Hollis Park
Cambridge Coastcare	Friends of Inglewood Triangle
Canning River Residents Environment Protection Assoc Inc	Friends of Lake Claremont Limited
Capel LCDC	Friends of Lake Gwelup
Carbon Neutral Charitable Fund	Friends of Meelup Regional Park Inc.
Care For Hedland Environmental Association Inc.	Friends of Mosman Park Bushland
Caring for the Avon River Environment Inc.	Friends of North Ocean Reef – Iluka Foreshore
Carnamah LCDC	Friends of Paganoni Swamp
Chapman River Friends	Friends of Piesse Brook Inc.
Chittering Landcare Centre	Friends of Queens Park Bushland
Claise Brook Catchment Group	Friends of Rossmoyne Park
Clever Clogs Community Organisation for Climate Action	Friends of Samphire Cove Nature Reserve
Cockburn Wetlands Education Centre Inc	
Cockburn Community Wildlife Corridor Inc	
Conservation Council WA	



Friends of Samson Park  
 Friends of Sorrento Beach & Marmion Foreshore  
 Friends of Susannah Lakes  
 Friends of Upper Lesmurdie Falls Inc  
 Friends of Warwick Bushland  
 Friends of Yongka Birl  
 Gascoyne Catchments Group  
 Geographe Catchment Council  
 Geographe Community Landcare Nursery Inc  
 Gero Clean Up Crew  
 Gillamii Centre Inc.  
 Gingin Water Group Inc  
 Gondwana Link Ltd  
 Green Skills inc  
 Greening Australia  
 Helena River Catchment Group Inc.  
 Jane Brook Catchment Group Inc.  
 Katanning LCDC  
 Kerkhof Carnaby Group  
 Landcare Serpentine Jarrahdale Inc  
 Lower Blackwood Land Conservation District Committee  
 Lyndon Land Conservation District Committee Ledge  
 Point Coastcare  
 Leschenault Catchment Council  
 Lower Helena Association  
 Mandurah Environment & Heritage Group  
 Margaret River Regional Environment Centre  
 Moore Catchment Council Inc  
 Mullaloo Beach Community Group Inc  
 National Trust of Western Australia  
 Nature Conservation Margaret River Region  
 Noongar Land Enterprise Group  
 North Stirling Pallinup Natural Resources Inc.  
 North Swan Land Conservation District Committee  
 (Bullsbrook Landcare)  
 Northern Agricultural Catchments Council  
 Oil Mallee Association  
 Origins Centre Soc. Inc  
 Oyster Harbour Catchment Group  
 Palomino Catchment Group  
 Peel-Harvey Catchment Council  
 Peel Region Western Ringtail Possum Action Group  
 Peron Naturaliste Partnership Inc  
 Perth Intrepid Landcare  
 Perth NRM  
 Quinns Rocks Environmental Group Inc  
 Rangelands NRM WA  
 Ravensthorpe Agricultural Initiative Network (RAIN)  
 RegenWA  
 Revegetation Industry Association of WA  
 River Conservation Society Inc.  
 Roleybushcare Inc  
 Roebuck Bay Working Group  
 SERCUL: South East Regional Centre for Urban  
 Landcare Inc Singleton Coastcare  
 South Coast Management Group  
 South Coast Natural Resource Management Inc.  
 South West and Peel Coastal Management Group  
 South West Catchments Council  
 Susannah Brook Catchment Group Inc.  
 Swan Estuary Reserves Action Group Inc.  
 Talbot Brook Land Management Assoc. Inc. Tangaroo  
 Blue Foundation  
 The Katanning Wildflower Group  
 The Seed Library Inc.  
 Toby Inlet Catchment Group Inc.  
 Toodyay Friends of the River  
 Toodyay Naturalists' Club Inc.  
 Torbay Catchment Group Inc Trees4Australia Trillion  
 Trees (Formally Men of the Trees)  
 Urban Bushland Council WA Inc  
 Undalup Association Inc.  
 WA Coastal and Marine Community Network  
 WA Landskills Inc  
 WA Malleefowl Recovery Group  
 Wagin Woodanilling Landcare Zone Inc.  
 Wannamal Lake Catchment Group  
 Warren Catchment Council Inc  
 Waterbird Conservation Group Inc  
 Western Australian Forest Alliance  
 West Koojan Gillingarra Land Conservation District  
 Committee  
 Wheatbelt NRM Inc.  
 Wildflower Society of Western Australia (Inc.) Wilson  
 Inlet Catchment Committee Inc. Wilson Wetlands  
 Action Group  
 Wirambi Landcare  
 WISALT Inc (Whittington Interceptor Sustainable  
 Agriculture Land Treatment Society)  
 Woodvale Waters Friends of Beenyup Channel Group  
 WoolkabunningKiaka  
 Yarra Yarra Catchment Management Group

## THE WALN TEAM

WALN operates with a volunteer Executive Committee representing members who work with contracted staff to provide benefits to members and raise the profile of landcare in WA.

The WALN Executive Committee meets monthly online to provide strategic and governance oversight to the operations of the organisation.

2022 WALN Office Bearers and Committee included:

<b>Chair:</b>	Mick Davis	Friends of Upper Lesmurdie Falls
<b>Deputy Chair:</b>	Jo Ludbrook	CoastSWaP
<b>Treasurer:</b>	Helen Watkins	Moore Catchment Council
<b>Secretary:</b>	John Holley	Gondwana Link
<b>Committee:</b>	Julian Sharp	Southern Forest Community Landcare
	Pierre Bouvais	WA Coastal and Marine Community Network
	Bruce Ivers	Bicton Environmental Action Group
	Jacinta Saad	Perth Intrepid Landcare
	Freya Spencer	Gilliamii Centre
	Sabian Wilde	Perth NRM
	Monty House	South Coast NRM

2021-22 part-time support staff included:

<b>Executive Officer</b>	Dr Louise Duxbury/Jacqueline Lahne
<b>Landcare Networker</b>	Kylie Payne
<b>Communications Officer</b>	Caroline Hughes
<b>Volunteer Membership Officer</b>	Jane Putland



## FINANCIAL REPORT

WALN began the 2021-22 financial year with a significant carry over of both National Landcare Network and State NRM Program Core Business Support Funds.

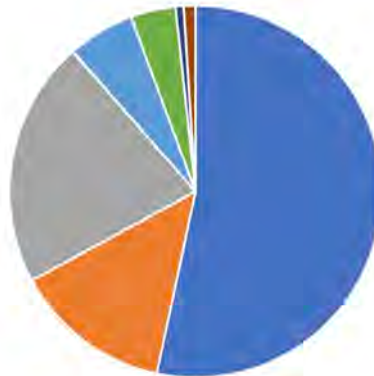
During 2021-22 WALN continued to deliver the two year core business support project funded by the Western Australian Government's State NRM Program. This grant funding significantly increased WALN's capacity and supplemented ongoing funding from the National Landcare Network.

WALN carried forward funds into the 2022-23 financial year to complete the State NRM Program Core Business Support Funding by November 2022.

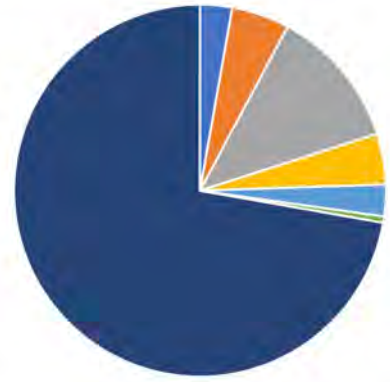
### 2021-2022 Income \$461,337

### 2021-22 Expenditure \$252,306

- State NRM Core Business Support Brought Forward
- National Landcare Network Brought Forward
- 2021-22 National Landcare Network
- WA Landcare Awards (Landcare Australia & State NRM)
- Department of Planning, Lands and Heritage Coastal Grant
- Donations
- Other income



- Administration Costs
- Communications
- Meetings & Workshops
- Consultants Fees
- Travel Expenses
- Insurance
- Salaries and oncosts



#### Breakdown of 2021-22 Income

2020-21 Funds Brought Forward	\$309,472
National Landcare Program	\$98,918
WA Landcare Awards	\$26,818
DPLH Coastal Grant	\$18,000
Donations	\$3,250
Interest	\$147
Other Income	\$4,732
<b>TOTAL INCOME</b>	<b>\$461,337</b>

#### Breakdown of 2021-22 Expenditure

Administrations Costs	\$7,029
Communications	\$12,700
Consultants Fees	\$11,144
Insurance	\$1,359
Meetings and Workshops	\$30,863
Salaries and oncosts	\$182,264
Travel Expenses	\$6,947
<b>TOTAL EXPENDITURE</b>	<b>\$252,306</b>
Funds Carried Forward to 2022-23	\$207,106

Further details of 2021-22 Income and Expenditure are available in 'WA Landcare Network Financial Report for the Year Ended 30 June 2022' prepared by Independent Auditors Fong Richards, Certified Practising Accountants and available for viewing by contacting WALN at [enquiries@landcarewa.org.au](mailto:enquiries@landcarewa.org.au).

## EXECUTIVE OFFICERS REPORT

The many activities we enjoyed delivering up until the end of June 2022 are all impossible without your engagement and participation as our members, so a big thank you from all of us!

Since starting with WALN in September 2021, it has been an intense and productive time and we have learned a lot about the variety of ways in which WALN, as a member driven organisation, can assist the community landcare sector and the whole community to maximise efforts to interact positively with our beautiful West Australian environment.

We are hopeful that the State government, observing and supporting the success of our 2020 grant, will continue to partner with us, with you, to keep community landcare happening and growing.

We are engaged at the national level, contributing to critical conversations with the Federal government about keeping the 'care' in landcare, for all that we do on land and water, and about policy change to support the actions of those working so hard to halt the harm to our environment.

We are hopeful of seeing some real dollars hit the ground under the new Federal government and are advocating for changed policy settings that reflect the moment we are living in rather than the past.

We are working on a document to support better collaboration between a range of organisations at the national and local levels that will assist better understanding, co-operation and collaboration so that the environment, and ultimately the whole community, will benefit from all of our efforts.

We welcome increased opportunities to work closely with First Nations People, and our growing understanding and deep respect for one another's perspectives.

Climate change challenges are stimulating environmental action and investment the likes of which we have never seen. Please, take encouragement from the fact that innovation, design, planning, development, action and behaviour change are happening, rapidly, globally. You are part of that response, and as a member of WALN, know we are investigating the growing number of ethical opportunities that arise to better resource your work in the environment.

We are small and we work hard on your behalf, because you work hard for us, for the community of WA. Keep engaged, everything you are doing at your own particular scale, counts massively!

### What's coming in 2022-2023?

- Funding application for continued partnering with State NRM
- Contract renewal with the National Landcare Network
- A bid for the 2023 State NRM Conference
- A collaboration agreement framework for use by groups in creating partnerships with NRM Regional bodies
- A nationally coordinated formal budget submission to the Federal Government for increased funding including projects such as 200 positions in the Landcare Rangers program and \$2m for a National Landcare Facilitator and more
- Advocacy to develop a Parliamentary Friends of Landcare Group in the WA Parliament to raise our profile and increase the number of politicians who support the community landcare movement
- Workshops, forums and events that expand skills and knowledge and support groups to achieve great outcomes for the environment and improve quality of life for all
- Survey 2023!



## WALN AS PART OF THE NATIONAL LANDCARE NETWORK

WA Landcare Network is a member of the National Landcare Network (NLN) alongside the other Landcare peak bodies in each State and Territory (Figure 1). The NLN gives a voice for Community Landcare across the country.

The Network has over 2,000 active State and Territory Landcare Organisation members representing 6,000 plus individual Landcare groups (Figure 2) and over 160,000 Landcarers across Australia. These groups feed into the representative nature of the NLN through the Members Council (Figure 1).

WA Landcare Network would like to acknowledge Keith Bradby AO and Dr Louise Duxbury, for their contribution on the NLN Board during the 2021-22 financial year.

The change of Federal Government saw renewed interest in the capacity of community Landcare to deliver national resource management projects at scale and WA Landcare Network looks forward to working with the NLN and other STOs across the country to ensure we are best placed to tackle future disaster responses and deliver real action on the pressing climate and environmental challenges of our times.

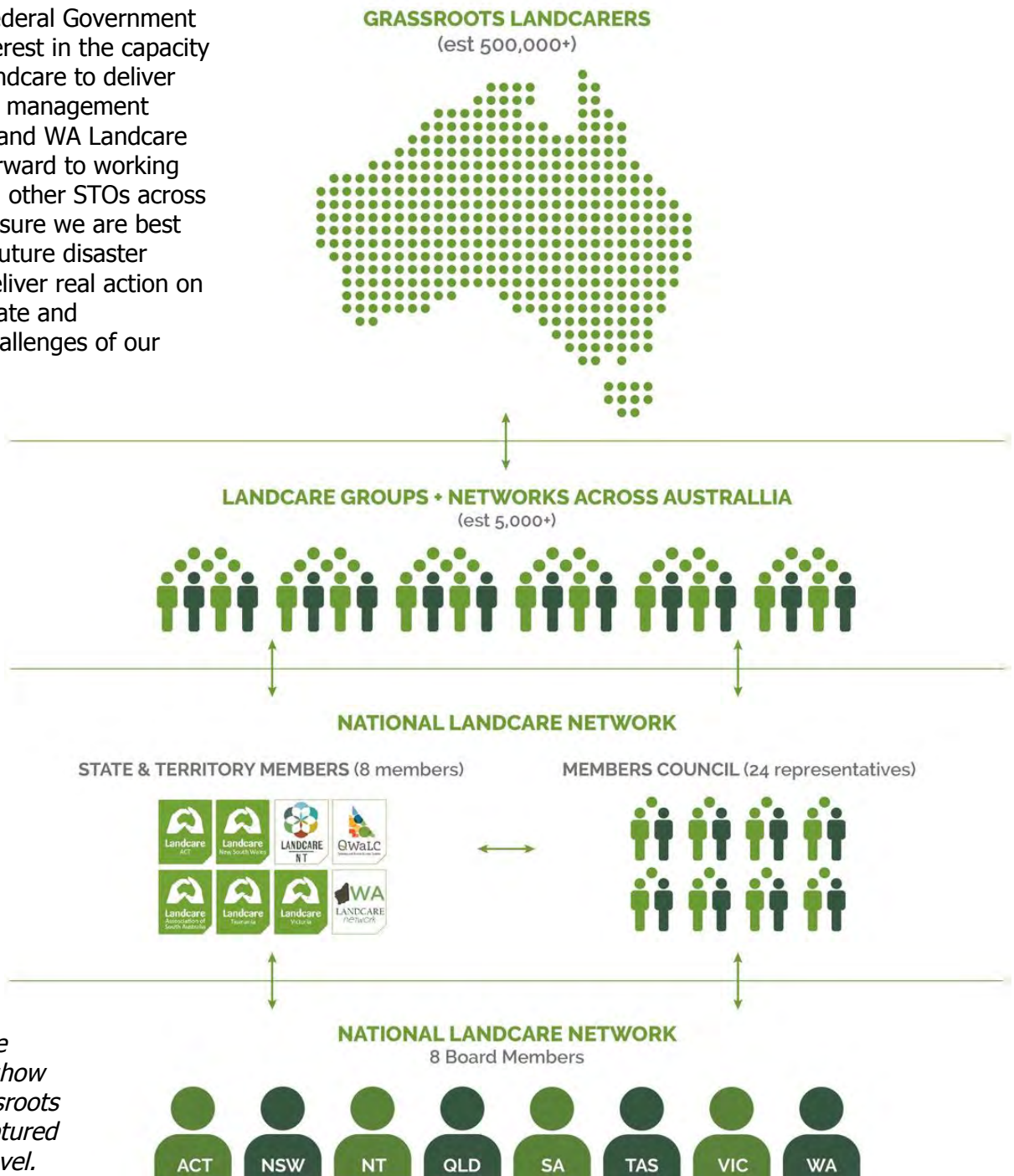


Figure 1. Organisational structure of the National Landcare Network showing how the voice of grassroots Landcarers is captured at the National level.

## A Roadmap for the Future

This year, WA Landcare Network was pleased to be able to co-design 'The Australian Community Landcare Futures Framework', delivered by the NLN. If adopted, it would see a \$48 million investment over five years in addition to, and complementing, the existing Regional Land Partnership program.

The Framework is underpinned by three priority initiatives:

- Landcare Futures Community Investment Initiative,
- Landcare Futures Environmental Markets Leadership Initiative, and
- Landcare Futures Innovation Initiative.

## Working Together

This year WA Landcare Network has enjoyed an unprecedented level of collaboration with other Landcare State and Territory Organisations (STOs), led by the NLN. With increased organisational capacity, the NLN has facilitated a number of knowledge exchange and co-design workshops with the aim of representing the needs of community Landcarers across the country and elevating a united representative voice and vision for policy makers. NLN facilitated workshops including:

- Regular STO C/EO Workshops
- National STO Communications Forum
- Future Framework Codesign
- National Environmental Science Program
- Needs and capacity of the national network
- Advocacy & Knowledge Sharing
- Collaboration
- State of the Environment Report 'Landcare; a beacon or hope';
- Biodiversity Markets.



Figure 2. Map of the National Landcare Network showing over 2,000 active STO members based on data provided in August 2022.



## People Place Future

The Value of Community Landcare in Western Australia

We acknowledge First Nations Peoples as the traditional custodians of the continent, the first Landcarers, and we recognise and learn from their unique cultural and spiritual relationships to the land, waters and seas. We pay our respects to Elders past, present and emerging.



Dr Danielle Brady and Dr Louise Duxbury  
May 2022

## 2021 SURVEY RESULTS

Your Collective Voice  
for Landcare in WA



### CONTACT US

WA Landcare Network  
PO Box 48, Dandaragan WA 6507

[enquiries@landcarewa.org.au](mailto:enquiries@landcarewa.org.au)

[www.landcarewa.org.au](http://www.landcarewa.org.au)

[Facebook.com/Landcarewa](https://www.facebook.com/Landcarewa)

[Twitter.com/Landcarewa](https://twitter.com/Landcarewa)

ABN 84 782 588 107